

M Pavilion



TECHNICAL PACKAGE



ENTERTAINMENT • AV



Introducing M Pavilion
Exciting, Expansive Events.

When you want an out-of-the-ordinary event experience, look no further than the M Pavilion. The newest addition to M Resort's 60,000 square feet of dynamic space is the ideal venue for high-energy concerts, boxing matches and other large-scale events.

The 25,000 square foot M Pavilion offers open, expansive spaces for optimum configurations without pillars with a maximum capacity of 2,500. Our premiere facility offers seamless entry from the M Resort ballrooms to provide an exceptional guest experience. Add in the M Resort's signature four star service and you'll be ensured that your event needs are met at every level.

The M Pavilion, provides you with the flexibility to customize your special meeting, expo or other event all under one roof.

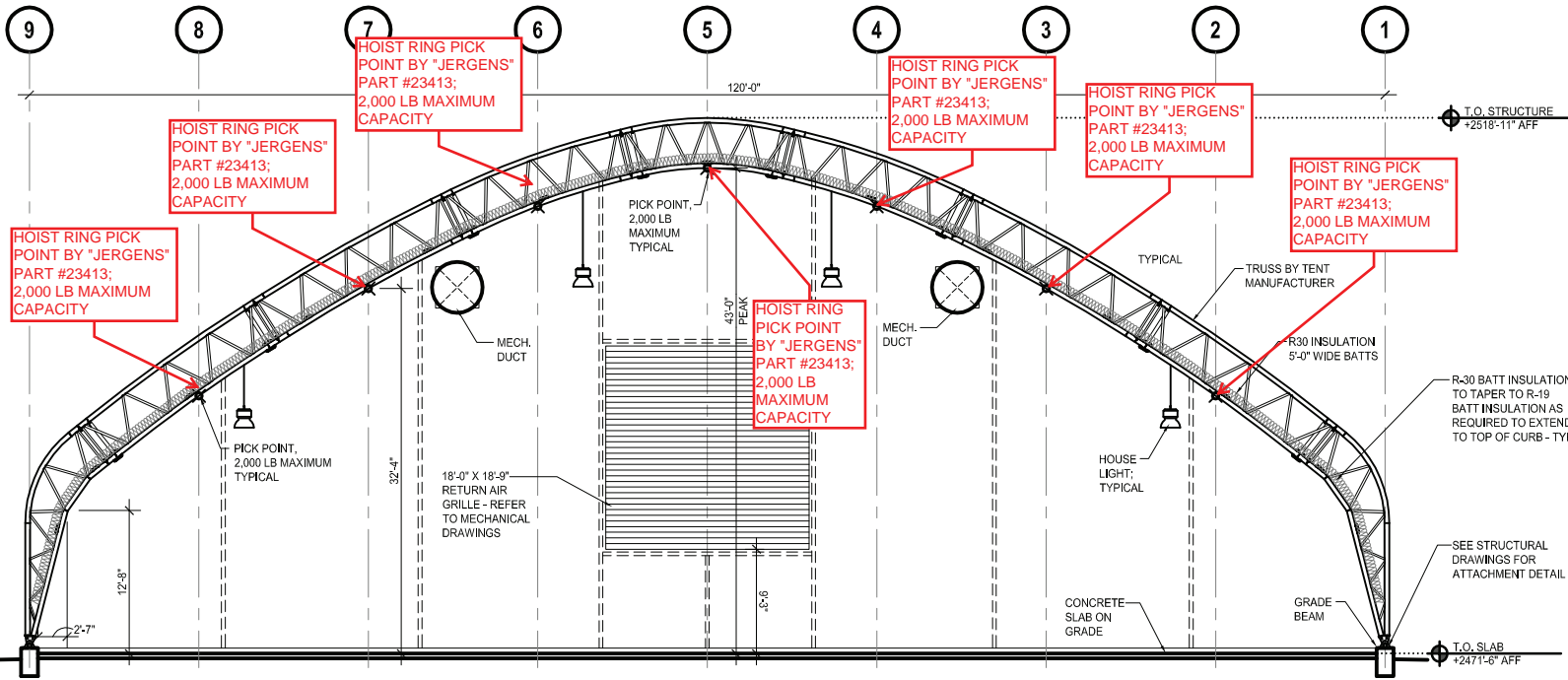
- Total square footage: 25,000
- Dimensions W x L: 120' x 210'
- Ceiling Height: 43' peak of sloped ceiling
- Two Loading Doors: 12' x 12'
- Pick point: 2,000 lb maximum
- Total pick points in facility 91
- Floor Load: 250 psf
- Electrical: Edison Plugs
- 60 foot covered concrete walkway open on sides
- Seating 2,200
- Fully carpeted facility
- 220 power in structure
- T1 lines, power every 30 feet for flexible power requirements

Pavilion Pick Points Per Truss: 7
 Total Lbs per Point: 2,000
 Total Lbs per Truss: 14,000

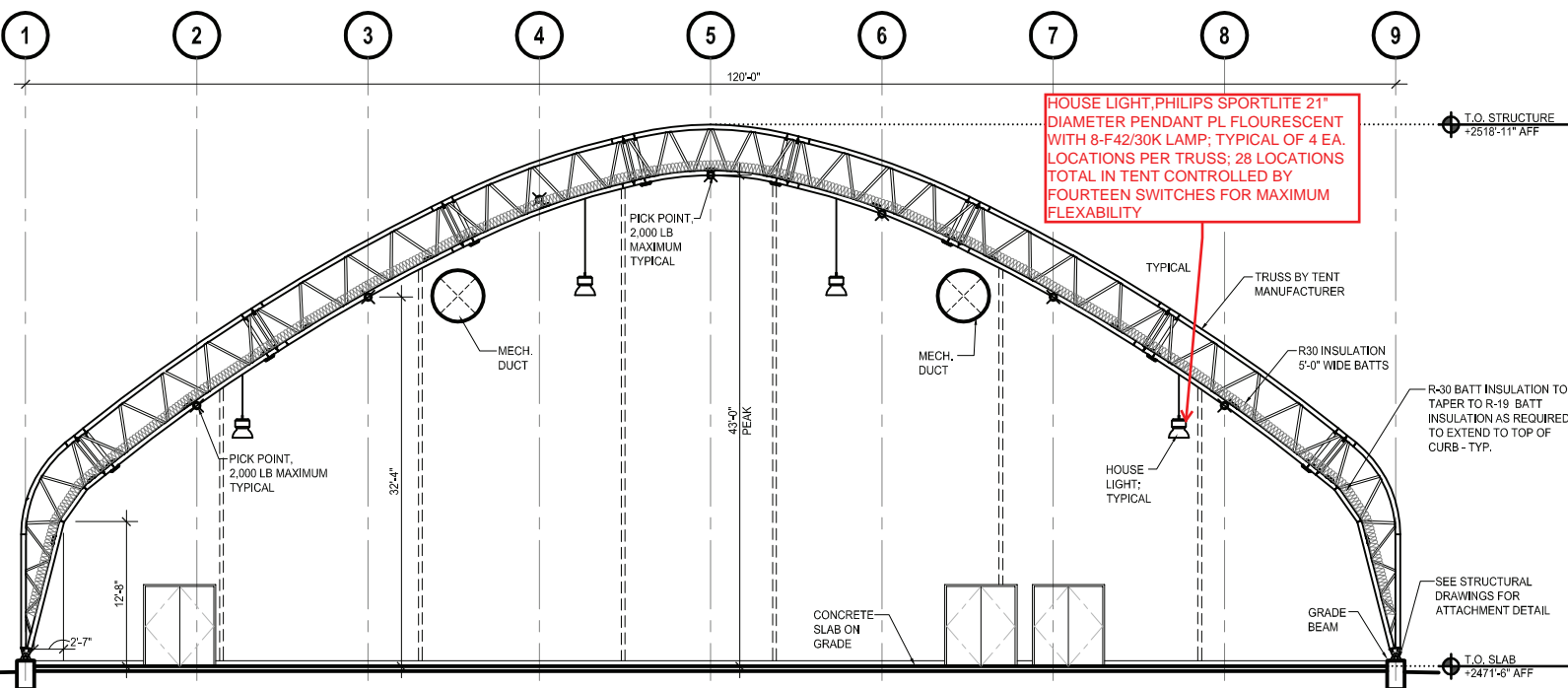


PAVILION

LAS VEGAS



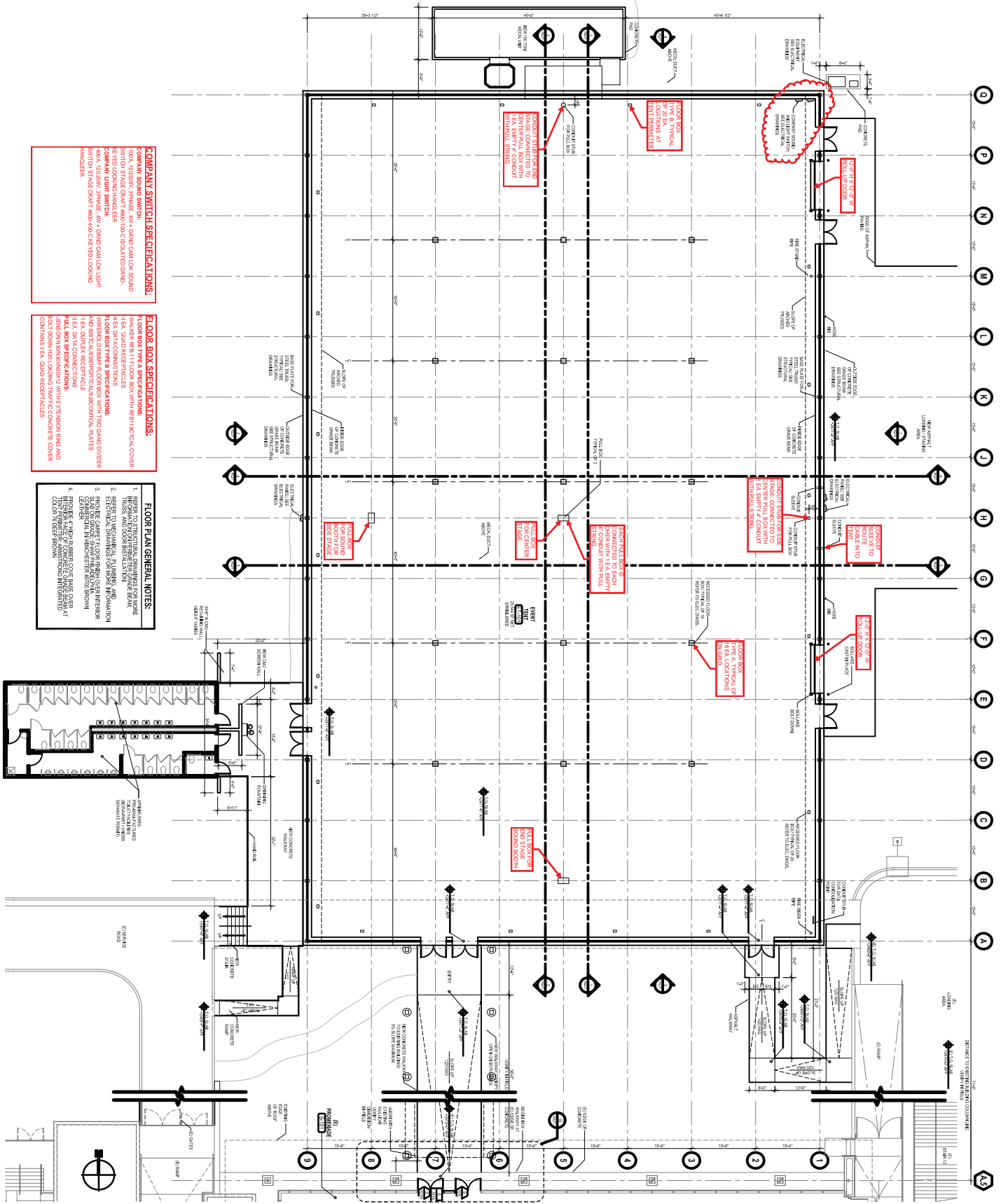
4 BUILDING SECTION D
 FN: 102070-A-A6,01.DWG SCALE: 1/8" = 1'-0"



3 BUILDING SECTION C
 FN: 102070-A-A6,01.DWG SCALE: 1/8" = 1'-0"

4" Conduit from back stage to FOH
 2 - Company Switch (1- 400amp, 1- 200amp) Back Stage

Sheet Title: Sep 10, 2014 - 09:00
 Prepared for the use of: Backstage

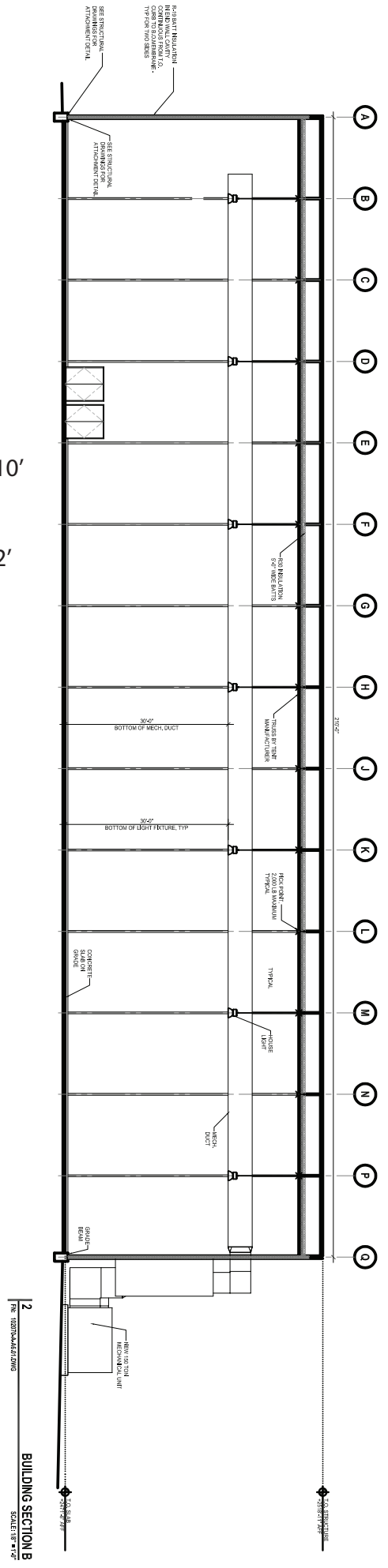
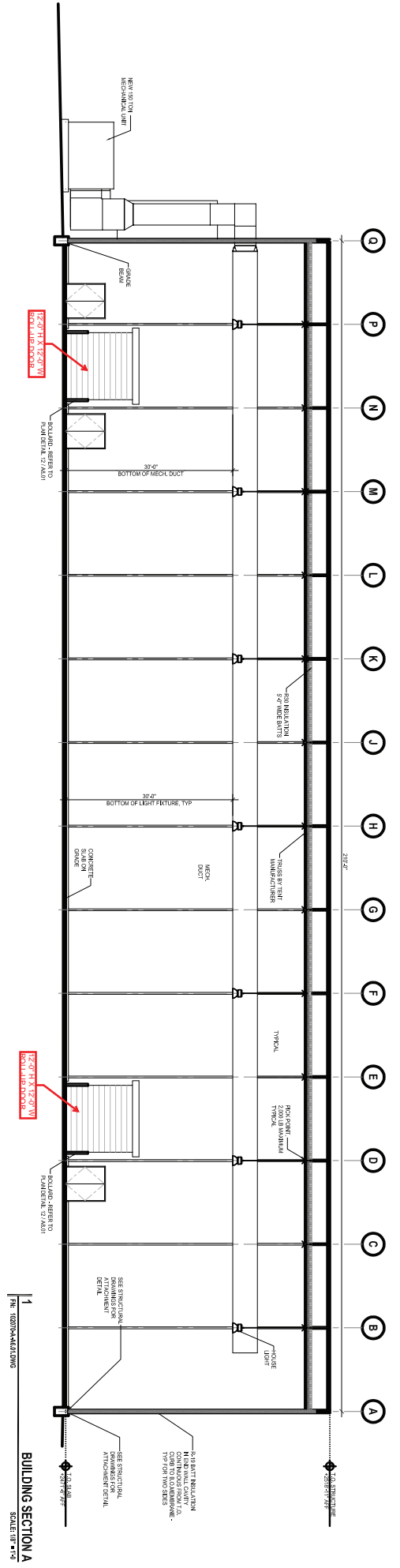




PAVILION

LAS VEGAS

Total # of truss for pick point hang: 13 (B-P)
 Dimensions W x L : 120' x 210'
 Ceiling Height : 43' peak of sloped ceiling.
 Two Loading Doors: 12' x 12'



Sample Concert Seating

210'

Optional

MAIN STAGE

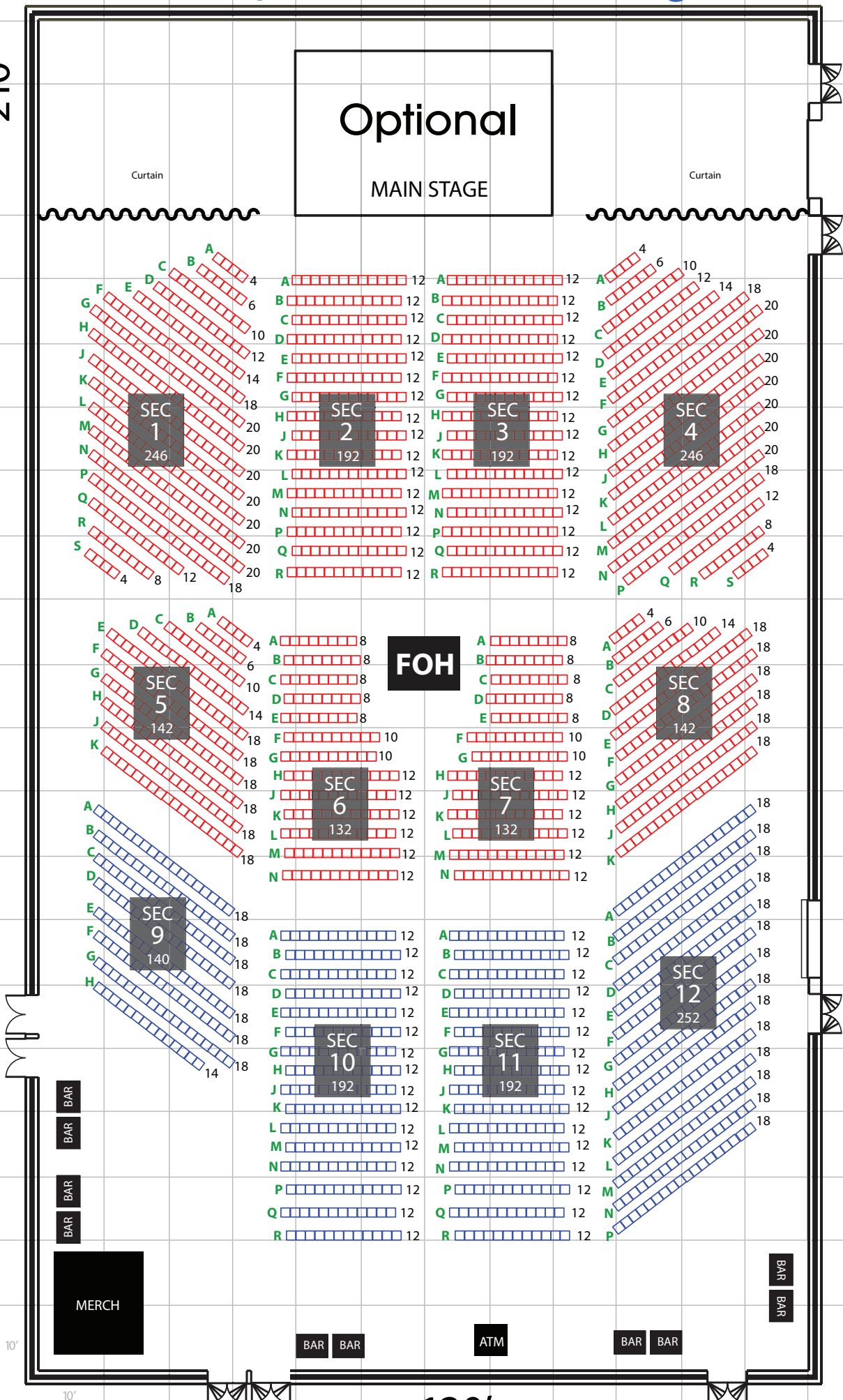
Curtain

Curtain

RESTROOMS
SMOKING

TOTAL SEATS
2,200

1,424
776



MERCH

BAR BAR

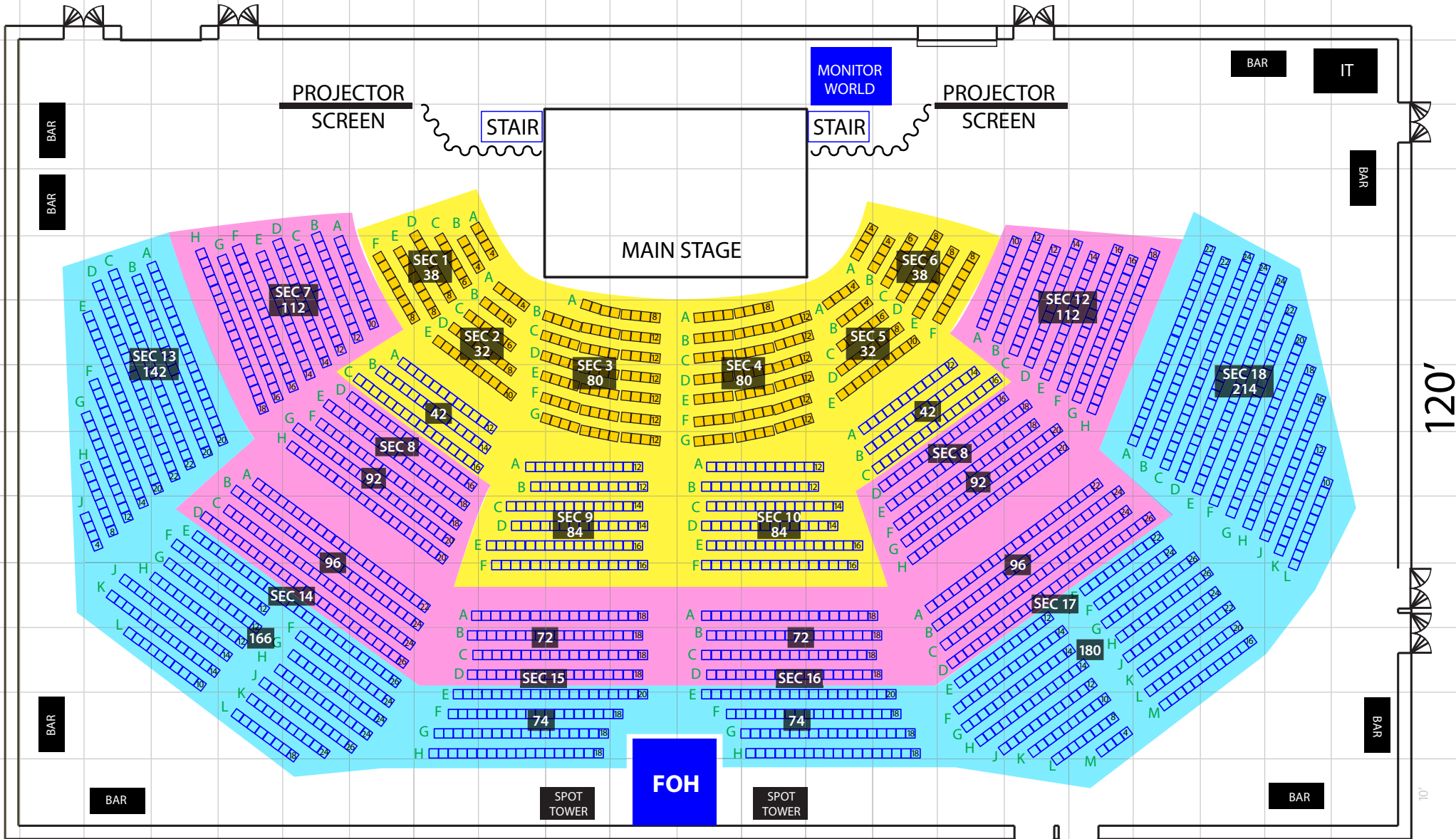
ATM

BAR BAR

BAR BAR

120'

PAVILION 2, 146 CAP.
4/16 update



210'

120'

RESTROOMS

SMOKING

GOLD SEATS
300
TOTAL SEATS
2,146

210'

Optional
MAIN STAGE

Curtain

Curtain

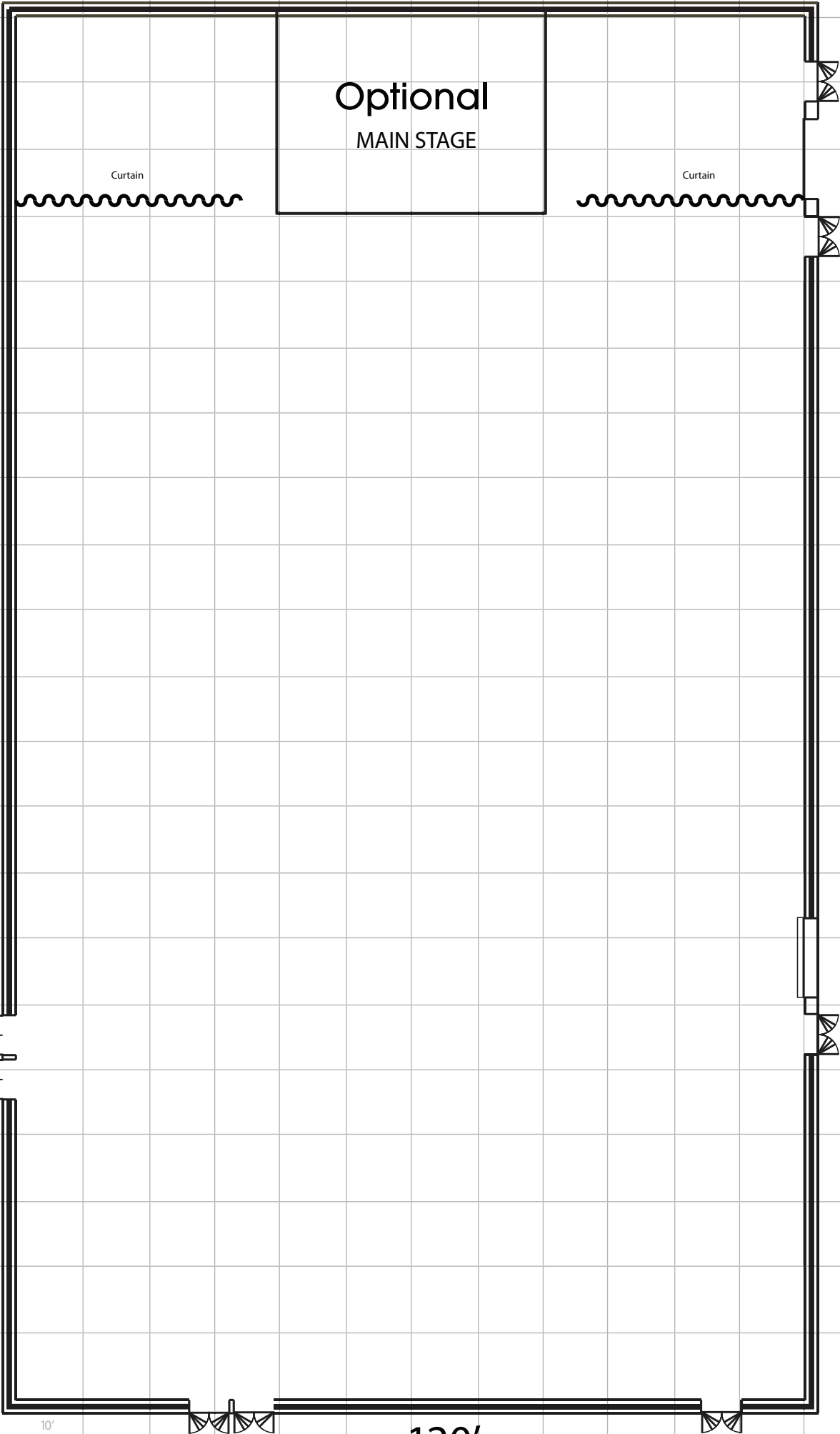
RESTROOMS

SMOKING AREA

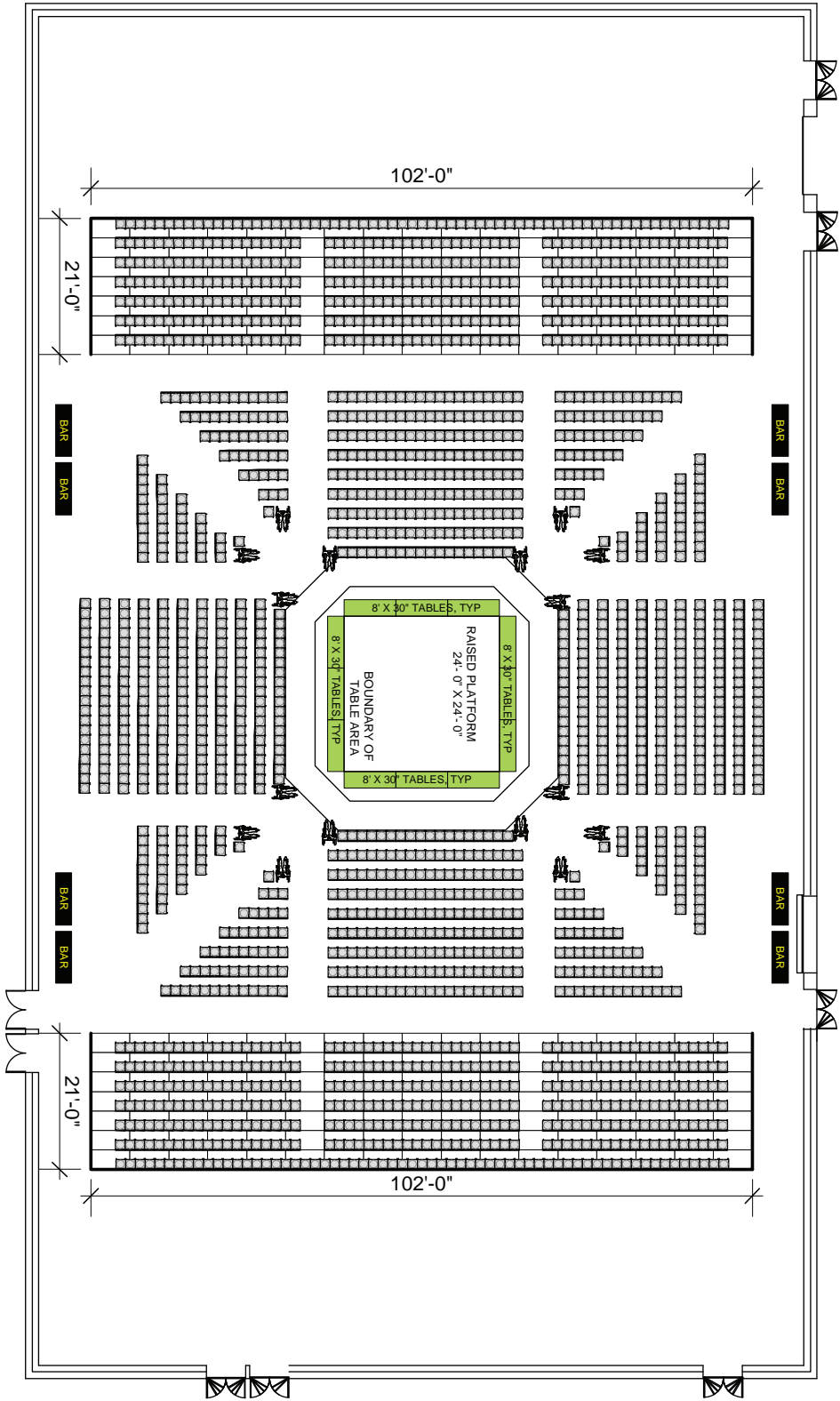
10'

10'

120'



Sample Center Stage Setup



SEATING

FLOOR CHAIRS	1054
MEDIA	78
WHEELCHAIRS	16
RISER SEATS	<u>822</u>
TOTAL	1970